




**ZECO BUILDING SYSTEMS**

## ***What we offer***

- *PEB Buildings*
- *Commercial Buildings*
- *Industrial Buildings*
- *Home Construction*







***“We are committed to provide timely and cost effective solution for our customers, while maintaining a continuous focus on safety and upholding an uncompromising level of quality”.***



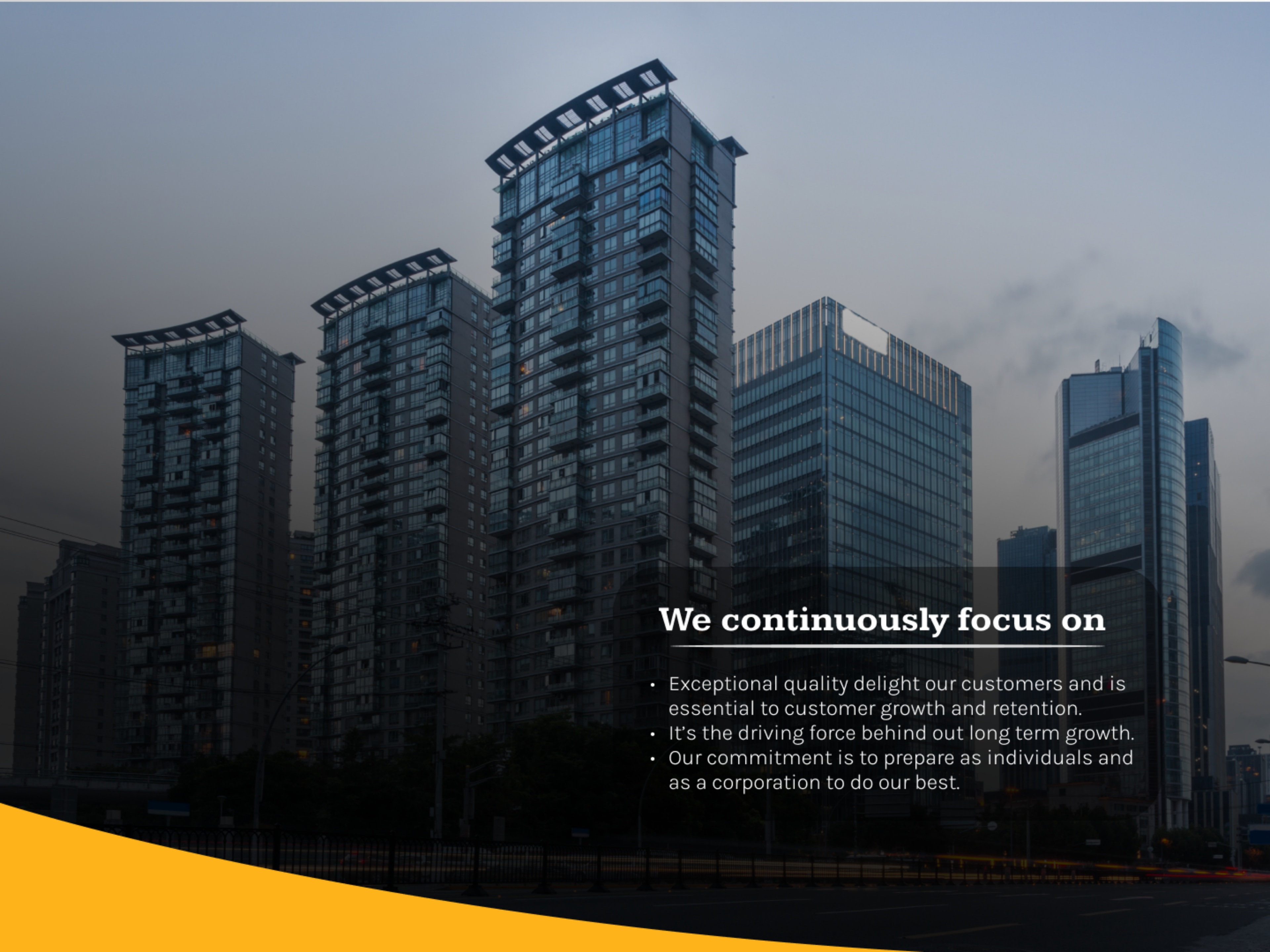
# CEO MESSAGE

Our company purpose to solve complex facility and construction related challenges, is what we aspire to do in a broad enduring sense. The values we share are embodied in what goes on at Zeco Building Systems from day to day. We believe that in such an environment sound decision making and effective strategies flow naturally from the give and take of daily business engagements among all team members. I have always believed that when it comes to defining and communicating a corporations vision and goals conciseness is a virtue.



Chief Executive Officer  
**Zaman Chaudhary**





## **We continuously focus on**

- Exceptional quality delight our customers and is essential to customer growth and retention.
- It's the driving force behind our long term growth.
- Our commitment is to prepare as individuals and as a corporation to do our best.



# OUR MISSION

It is our mission to lead the industry in customer satisfaction and set standards of excellence. Our commitment to quality is your guarantee of satisfaction.

Zeco Building Systems also specializes in providing a vast range of end-to-end construction services, PEB buildings, Commercial building, Factory Shed, Warehouse's, Multi-Story Construction, Mega Malls, School building, Car parking shed and dairy shed.

We have an extensive range of machinery to meet a wide variety of fabrication requirements. We are also constantly applying new methods to improve our services and offer innovative and intelligent solutions.





# OUR COMPANY

Zeco Building Systems is one of the leading PEB Buildings, Commercial buildings, Warehouse's, Mega malls, Multi-Story construction, School project and home construction company in Pakistan that offer a complete building solution starts from engineering procurement and manufacturing and extends commissioning with hassle free associated civil works and other building accessories. We believe in quality service better timeline economical solutions and after sale customer care. Zeco Building Systems has versatile portfolio in pre engineered steel structures including Aircraft Hangars, Vehicle parking shed, Dairy farm shed industrial warehouses , Multi-Story buildings, residential and commercial buildings across the country.





# OUR SERVICES



PEB BUILDINGS



COMMERCIAL  
BUILDINGS



INDUSTRIAL  
BUILDINGS



HOME  
CONSTRUCTION



# PRE-ENGINEERED BUILDINGS (PEB)

Pre-Engineered steel buildings are a steel structures built over a structural concept of primary member's, secondary members, roof and wall sheeting connected to each other and various other building components.

## Advantages

- Economical in cost
- Factory Controlled quality
- Durability
- Longevity
- Flexibility in expansion
- Environmental friendly
- Faster installation

Pre-Engineered steel buildings are a steel structures built over a structural concept of primary member's, secondary members, roof and wall sheeting connected to each other and various other building components.

**We Builds:** Factories, Warehouses, Workshop, Commercial showrooms, Cold Storage, Parking shad, Dairy farm sheds





Zeco Building Systems manufacturing dairy farm sheds for Global Dairy Tech (Pvt.) Ltd. Global Dairy Tech (Pvt.) Ltd is one of the leading dairy farm company in Pakistan. Zeco Building Systems has delivered 300 plus sheds to Global Dairy Tech (Pvt.) Ltd.





# COMMERCIAL BUILDING

A structure designed for business or commercial use. Zeco Building Systems construct vast variety of commercial buildings including:

- Office buildings
- Retail store
- Multi story building
- Warehouses
- Hotels
- Restaurants
- Commercial plaza
- Mega Malls

## Other types of commercial buildings

- Schools
- Places of worship
- Gymnasiums
- Libraries
- Museums
- Hospitals
- Clinics





# INDUSTRIAL BUILDINGS

A large structure primarily used for manufacturing good storing raw materials or distributing products, essentially a factory or warehouse designed for large scale production or storage operations, often featuring open floor plans, high ceilings and heavy duty construction to accommodate machinery and large equipment.

## Key Points

- **Function:** Primarily used for manufacturing, assembly, storage and distribution of goods.
- **Features:** High ceilings large open spaces heavy duty structural components to support heavy machinery, loading docks for easy access.

**Examples:** Factories, Warehouse's, Power plants, Refineries, Cold storage, Facilities.  
Zeco Building Systems is Pakistan's best buildings construction company. We have highly qualified staff to fulfil requirements and expectations of our clients.





# HOME CONSTRUCTION

The process of building a house apartment or other residential structure it involves designing the home obtaining permits preparing the site and building the structure.

Zeco Building Systems build all types of home such as:

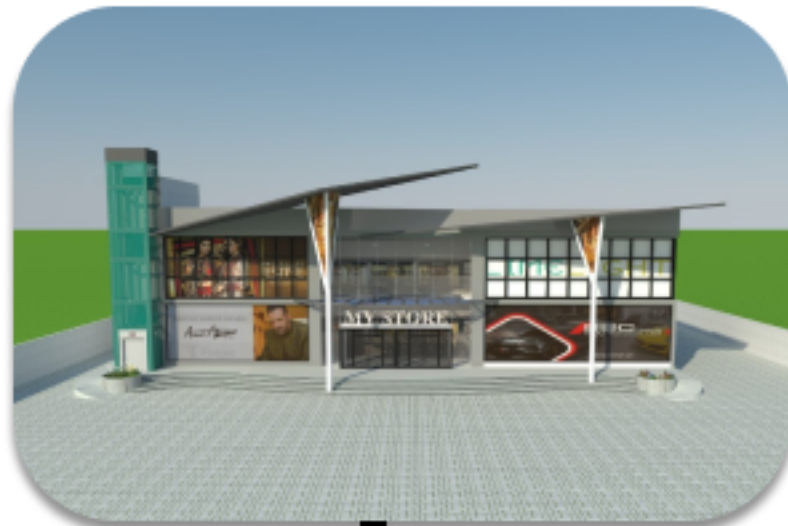
- Modern homes
- Spanish homes
- Ultra luxury homes
- Farm houses





# PROJECT **CYCLE**

**MALL OF LALA MUSA  
(GUJRAT)**



**BRAVO STORES WAREHOUSE  
(RAIWIND)**



**ZAFAR ARCADE  
COMMERCIAL PLAZA  
(DHA PHASE VIII, LAHORE)**



**UNIMSA PVT. LIMITED  
(KPK)**



**AS SUFFA SCHOOL SYSTEM  
(JEHLAM)**



**AHMAD POLYMER INDUSTRIES  
(GODOON)**



# WHY ZECO BUILDING SYSTEMS

## Expertise

- PEB Building
- Commercial Buildings
- Industrial Buildings
- Home Construction

## Excellence

- Our services are tailored to exceed your expectations.
- We work closely with our clients to achieve their goals, offering technical support, practical solutions and expert guidance as required.

## Design

- We offer flexible options for planning
- By utilizing our extensive experience and customer input, we can create solutions that answer your needs.

## Quality and Safety

We ensure that all work is completed to top quality standards, to deliver superior products to our customer. We maintain strict safety standards to keep our employees and customers safe at all time.





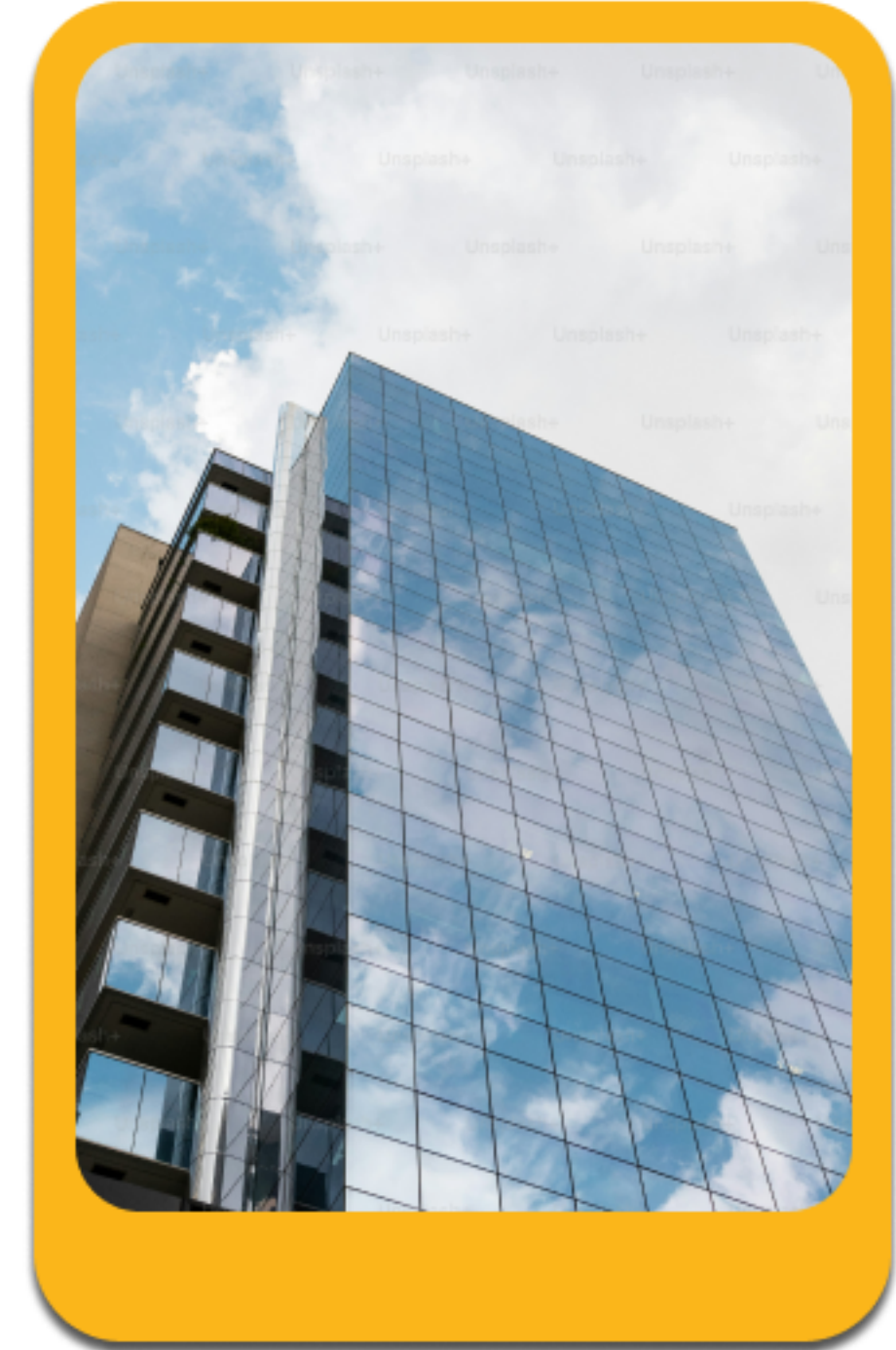
# HOW IT WORKS



**Plan & Design**



**Construction**



**Delivering**



# OUR PROJECTS

- Mall of Lala Musa, Gujrat
- Bravo Stores Warehouse, Raiwind
- Zafar Arcade Commercial Plaza, DHA Phase VIII, LHR
- Unimsa Pvt. Limited, KPK
- As Suffa School System, Jehlam
- Ahmad Polymer Industries, Godoon
- Al Safina Dairy Farm, Multan
- Pride Dairy Farm, Chakwal
- KAF Dairy Farm, Rawat
- A&A Dairy Farm, Multan
- MIK Dairy Farm (Phase 1), Depalpur
- Nayab Dairy Farm, Sheikhupura
- Rahim Dairies, Multan
- Khyber Dairies, Swabi
- Brother's Dairy Farm (Phase 1), Nankana
- Dar Dairies (Pvt.) Ltd, Gujranwala
- Tasaddaq Dairy Farm, Muridke
- Mubashir Dairy Farm, Depalpur
- Cattle Den Dairy Farm, Jia Bagga
- Zam Zam Dairy (Phase 2), Bhalwal
- Ghani Dairies (Phase 1), Noorpur Thal
- Ibrahim Dairies (Phase 1), Faisalabad







# ZECO BUILDING SYSTEMS

## » CONTACT US:

UAN: 042-111 222 438

Phone: +92 311 1000 805


Mail: [info@zeco.pk](mailto:info@zeco.pk)

Web: [www.zeco.pk](http://www.zeco.pk)

## » SOCIAL MEDIA PAGES

 /Zeco Building Systems

 /Zeco Building Systems

 /channel/Zecobuildingsystems


## » ADDRESS

**Lahore Office:**

27CCA, DHA Phase 8 (Ex Park View), Lahore,  
Pakistan.

## » Peshawar Office:

Rehman Plaza, Ring Road, Hayatabad Peshawar.

 +92 313 1958838

